



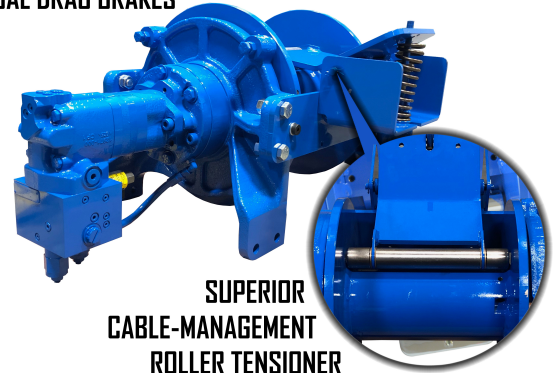
HERCULES 25000

Heavy Duty Planetary

25,000 lb
Rated Line Pull



DUAL DRAG BRAKES



SUPERIOR
CABLE-MANAGEMENT
ROLLER TENSIONER

Features and Benefits

- Synthetic rope approved
 - 12 strand (HMPE), commonly known as Dyneema
 - Maximum Winch capacity is 250 ft.
- Fast line speed
 - Up to 38 ft/min under full load
- Compact design
 - Optimizes space usage
 - Increased cable capacity
- Negative draft clutch design
 - Ensures positive hold on load
- Internal air-shift free spool
 - Enables remote operations
- Low temperature shifting (down to -40° F/C)
 - Allows for extreme cold weather operation
- High-efficiency gear set
 - Optimizes performance
- Superior cable management
 - Roller Tensioner
 - Improved bird nesting control
 - Constant spring force
 - Adjustable pneumatic force
 - Dual adjustable drag brakes
- Two speed motor
 - 12 or 24 VDC 2-speed shifting
 - Reliable control signal

HERCULES 25000 Specifications (9.6 cu. in. motor - Fast Speed)

Rated Line Pull (Low Speed)	25,000 lb (11,340 kg)
Weight (without Cable)	436 lb (198 kg)
Gear Reduction	25.53:1

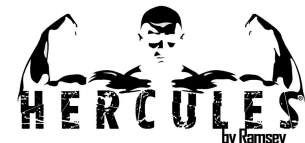
HERCULES 25000 Standard Drum							
Layer of Cable		1	2	3	4	5	6
Rated Line Pull / Layer* (Low Speed)	lb	25,000	20,800	17,900	15,600	13,900	12,500
	kg	11,340	9,435	8,119	7,076	6,305	5,670
Rated Line Pull / Layer* (High Speed)	lb	12,500	10,400	8,950	7,800	6,950	6,250
	kg	5,670	4,717	4,060	3,538	3,152	2,835
Line Speed – Low (at 25 GPM)*	FPM	38	44	51	58	65	71
	(MPM)	11.6	13.4	15.5	17.7	19.8	21.6
Line Speed – High (at 25 GPM)*	FPM	76	88	102	116	130	142
	(MPM)	23.2	26.8	31.1	35.4	39.6	43.3
Cable Capacity* Standard Drum	ft	25	60	100	145	195	250
	m	7.6	18.3	30.5	44.2	59.4	76.2

* Specifications based on recommended wire rope of .63" (16 mm) EIPS cable and 9.6 cu. in. (157 cc)/rev. motor at 2950 psi (203 bar) working pressure.

* Use only Ramsey Winch recommended synthetic rope.

- Directional control valve: 3-position, 4-way motor spool. - Winch meets SAE J706.

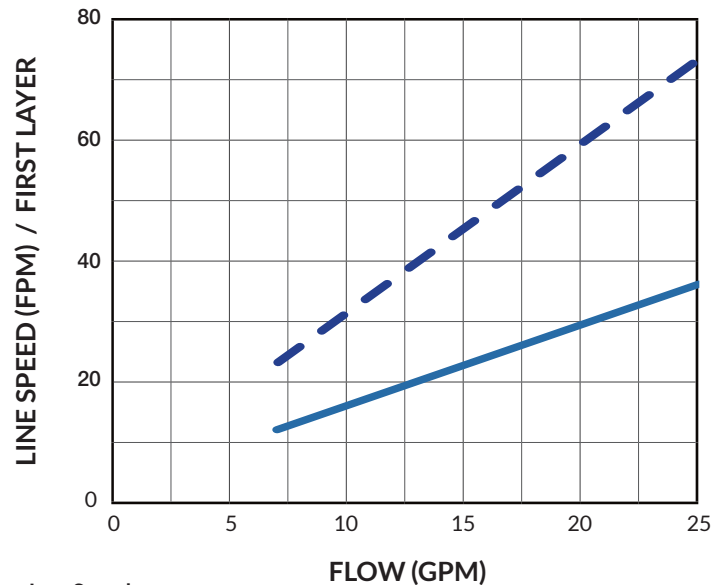
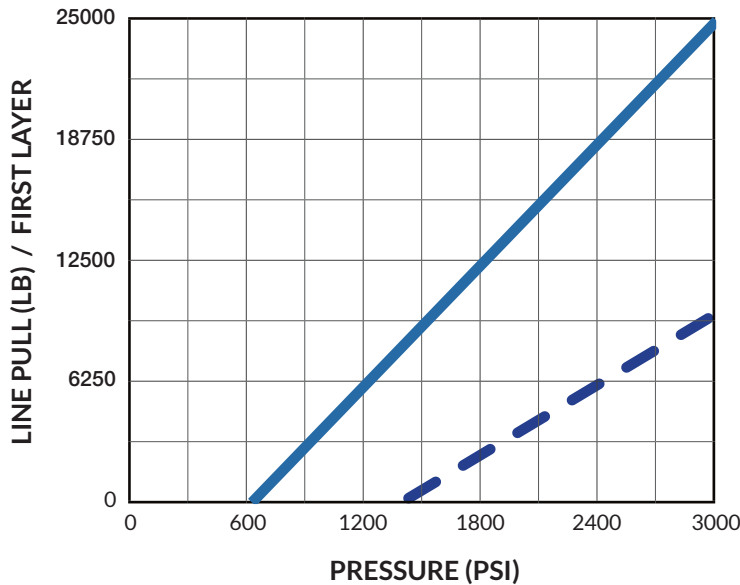
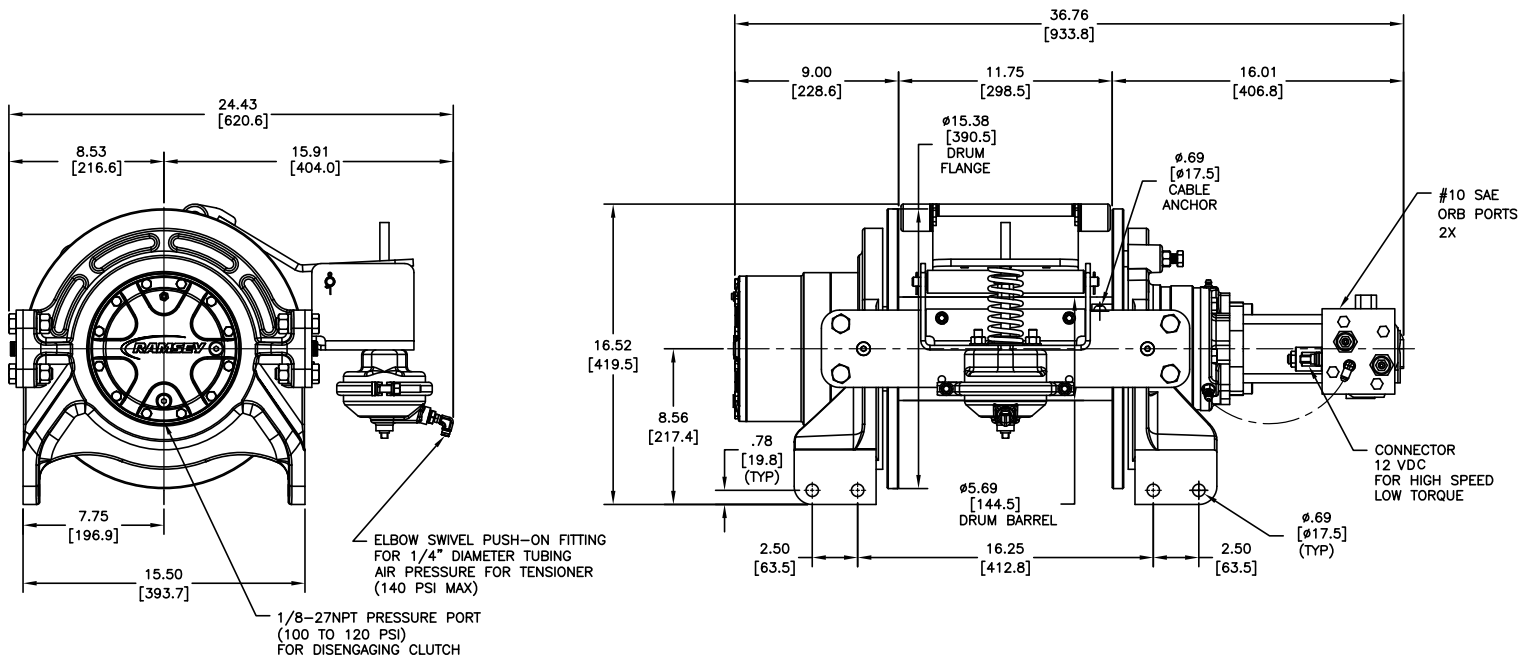
- Fabricated drum
 - Straight flanges reduce cable climbing
- Bi-directional winch
 - Flexibility for over or under winding
 - Dual cartridges c/b valves for easy rotation change



Ramsey Winch® and Hercules® are brands of Ramsey Industries, Inc. Ramsey Winch reserves the right to make changes to our products without notice.

4707 N. Mingo Road, Tulsa, OK 74117 | Phone: 1-800-777-2760

www.ramseywinch.com



— Low Speed
 - - High Speed

