



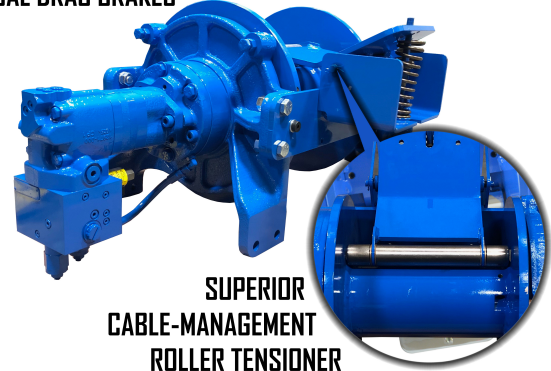
HERCULES 25000

Heavy Duty Planetary

25,000 lb
Rated Line Pull



DUAL DRAG BRAKES



SUPERIOR
CABLE-MANAGEMENT
ROLLER TENSIONER

Features and Benefits

- Synthetic rope approved
 - 12 strand (HMPE), commonly known as Dyneema
 - Maximum Winch capacity is 250 ft.
- Fast line speed
 - Up to 28 ft/min under full load
- Compact design
 - Optimizes space usage
 - Increased cable capacity
- Negative draft clutch design
 - Ensures positive hold on load
- Internal air-shift free spool
 - Enables remote operations
- Low temperature shifting (down to -40° F/C)
 - Allows for extreme cold weather operation
- High-efficiency gear set
 - Optimizes performance
- Superior cable management
 - Roller Tensioner
 - Improved bird nesting control
 - Constant spring force
 - Adjustable pneumatic force
 - Dual adjustable drag brakes
- Two speed motor
 - 12 or 24 VDC 2-speed shifting
 - Reliable control signal

HERCULES 25000 Specifications (11.9 cu. in. motor - Standard Speed)

Rated Line Pull (Low Speed)	25,000 lb (11,340 kg)
Weight (without Cable)	436 lb (198 kg)
Gear Reduction	25.53:1

HERCULES 25000 Standard Drum							
Layer of Cable		1	2	3	4	5	6
Rated Line Pull / Layer*	lb	25,000	20,800	17,900	15,600	13,900	12,500
	kg	11,340	9,435	8,119	7,076	6,305	5,670
Rated Line Pull / Layer*	lb	12,500	10,400	8,950	7,800	6,950	6,250
	kg	5,670	4,717	4,060	3,538	3,152	2,835
Line Speed – Low (at 25 GPM)*	FPM	28	33	39	44	50	56
	(MPM)	8.5	10.1	11.9	13.4	15.2	17.1
Line Speed – High (at 25 GPM)*	FPM	56	66	78	88	100	112
	(MPM)	17.1	20.1	23.8	26.8	30.5	34.1
Cable Capacity*	ft	25	60	100	145	195	250
	m	7.6	18.3	30.5	44.2	59.4	76.2

* Specifications based on recommended wire rope of .63" (16 mm) EIPS cable and 11.9 cu. in. (195 cc) /rev. motor at 2,575 psi (203 bar) working pressure.

* Use only Ramsey Winch recommended synthetic rope.

- Directional control valve: 3-position, 4-way motor spool. - Winch meets SAE J706.

- Fabricated drum
 - Straight flanges reduce cable climbing
- Bi-directional winch
 - Flexibility for over or under winding
 - Dual cartridges c/b valves for easy rotation change



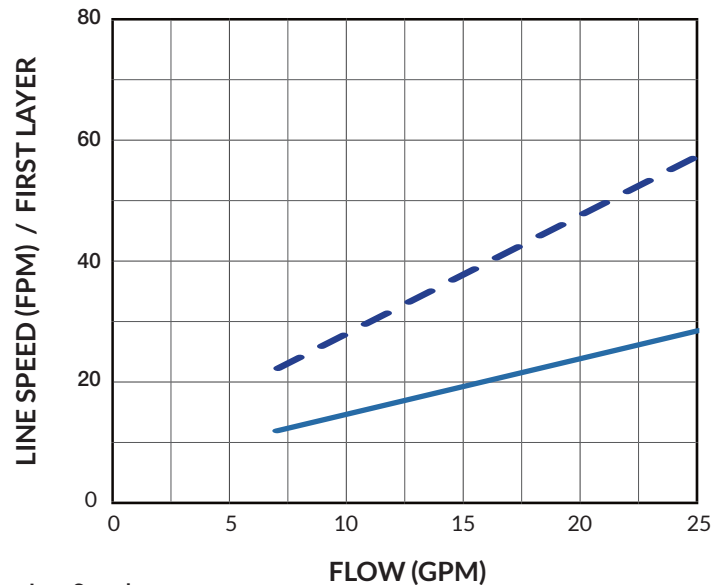
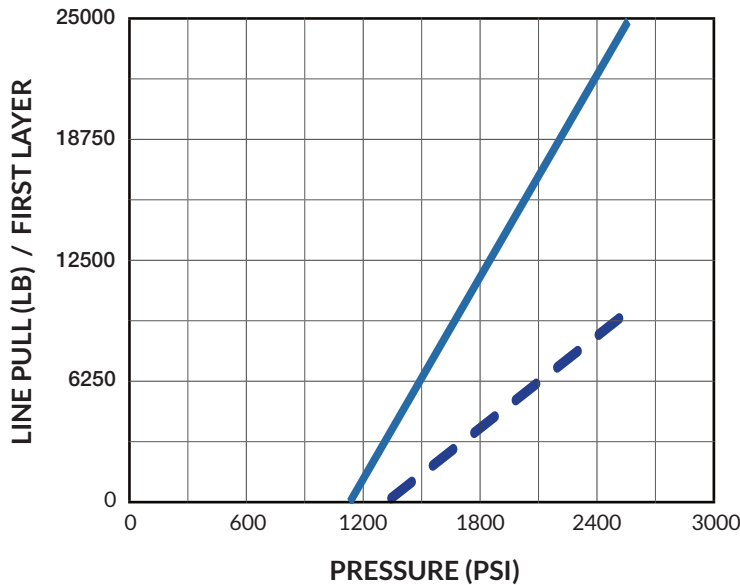
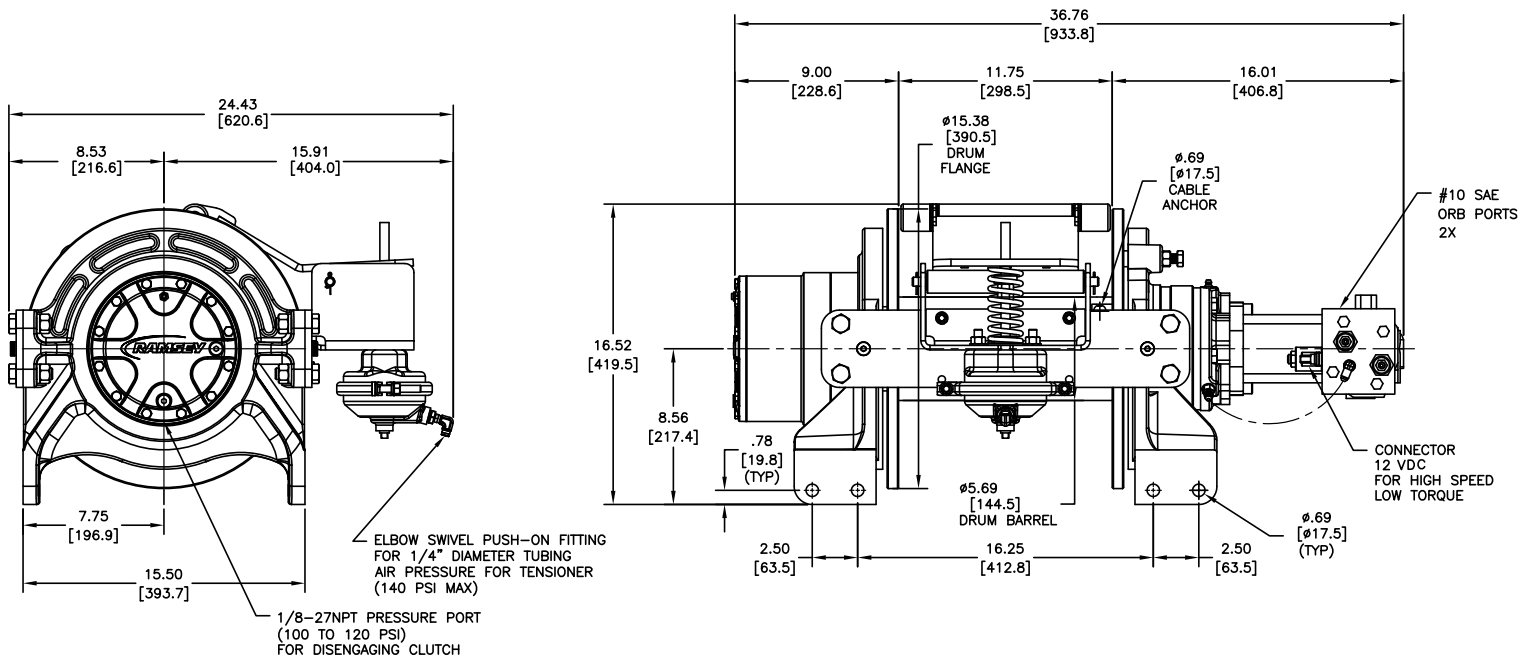
Ramsey Winch® and Hercules® are brands of Ramsey Industries, Inc. Ramsey Winch reserves the right to make changes to our products without notice.

4707 N. Mingo Road, Tulsa, OK 74117 | Phone: 1-800-777-2760

www.ramseywinch.com

HERCULES 25000 Heavy Duty Planetary

Rated Line Pull **25,000 lb**



— Low Speed
 - - High Speed



Ramsey Winch® and Hercules® are brands of Ramsey Industries, Inc. Ramsey Winch reserves the right to make changes to our products without notice.

4707 N. Mingo Road, Tulsa, OK 74117 | Phone: 1-800-777-2760

www.ramseywinch.com