

RAMSEY WINCH

SCH 6000

Ramsey industrial hydraulic service crane hoists are developed to meet a need for increased line speed of crane applications and other industrial uses. Hoists feature single lubricant for all temp ranges and are light weight.



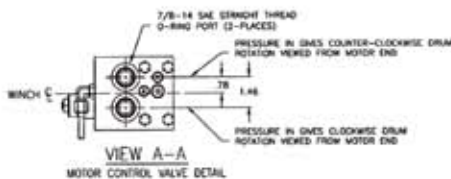
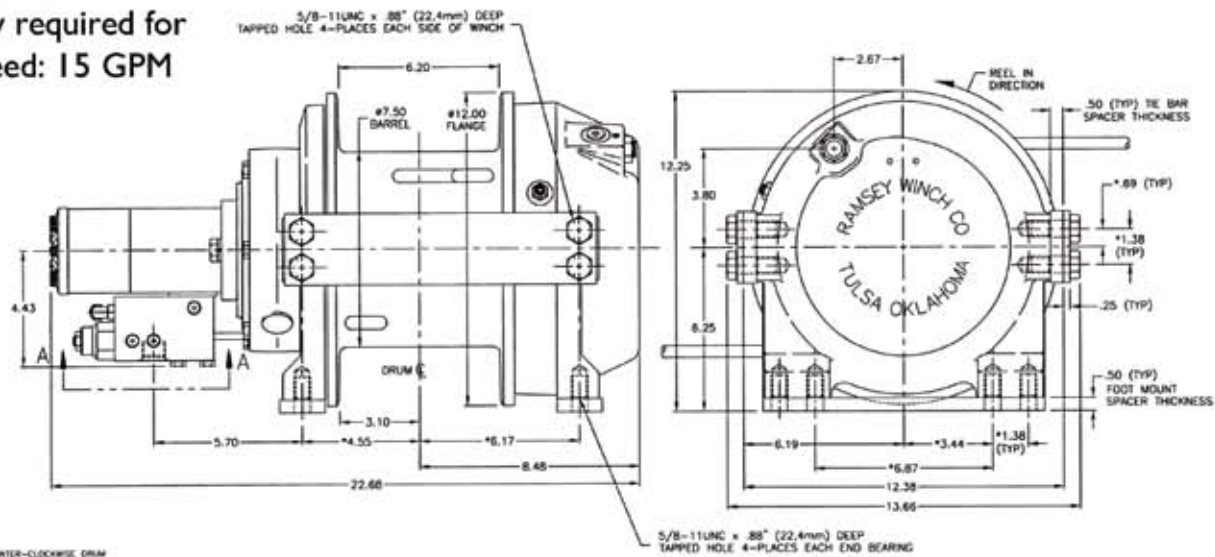
Part Number 123413

Specifications:

- Rated Line Pull: 6,000lbs. (First Layer) (2,720 kgs)
- Gear Reduction Ratio: 7.7:1
- Weight 275 lbs. (125 kgs) without cable
- Recommended Wire Rope Size: 7/16 in.
- Hydraulic Pressure Required for Rated Line Pull: 2,100 PSI
- Hydraulic Flow required for Rated Line Speed: 15 GPM

Layer of Cable

		1	2	3	4
Line Pull	lbs	6000	5400	4900	4500
	kgs	2720	2440	2220	2040
Line Speed	fpm	54	58	63	68
	mpm	16.4	17.6	19.2	19.4
Cable Capacity	ft	25	55	85	120
	m	7	16	25	36



DIMENSIONS SHOWN ARE INCHES OVER MILLIMETERS