



Ramsey Winch Company OWNER'S MANUAL UTV HONCHO 5000 Winch



NOTE: Fairlead does not attach directly to winch.

Layer of Cable		1	2	3	4	5	6
Rated Line Pull	(lbs)	5,000	4,200	3,600	3,200	2,800	2,600
Per Layer	(kg)	2,270	1,900	1,630	1,450	1,270	1,180
Cumulative Cable	(ft)	5	15	30	40	55	60
Capacity Per Layer*	(m)	1.5	4.5	9	12.1	16.7	18.2

Line Pull First	(lbs)	NO	1,000	3,000	5,000
Layer	(kg)	LOAD	454	1,363	2,272
Line Speed First	(FPM)	39	31	8	6
Layer	(MPM)	12.1	9.7	2.6	2.1
Amp Draw	(12V)	72.8	180	295	420

*Depends on cable being uniformly wound onto drum.

Congratulations

You have purchased the finest winch available in its service class. It features a highly efficient 3 stage planetary gear set which transmits torque from a permanent magnet motor. A safe positive clutch allows free spooling for quick cable deployment. Your Ramsey winch was designed and manufactured to provide you with the utmost in utility. As with any device that combines power and movement in its use, there are dangers if improperly used.

At the same time, there are easier and faster ways for getting the job done if certain precautions are taken first. Please read this manual carefully. It contains useful ideas in obtaining the most efficient operation from your Ramsey Winch and safety procedures you need to know before beginning use. When you follow our guidelines for operation, your Ramsey winch will give you many years of satisfying service. Thank you for choosing Ramsey. You will be glad you have one working for you.

Please Note: Ramsey UTV 5000 winches are designed primarily for ATV/UTV use. This winch is not designed to be used in industrial applications (car haulers /carriers, wreckers, hoisting, etc.), and Ramsey does not warrant it to be suitable for such use. Ramsey makes a separate, complete line of winches for industrial/commercial use. Please contact the factory for further information.



CAUTION: READ AND UNDERSTAND THIS MANUAL BEFORE INSTALLATION AND OPERATION OF WINCH. SEE SAFETY PRECAUTIONS.

TABLE OF CONTENTS

Performance Specifications	cover
Safety Precautions	1
Tips for Safe Operation	2
Techniques of Operation	2
General Installation	3
Toggle Switch Installation	3
Operating Instructions	4
Maintenance	4
Cable Installation	4
Trouble Shooting Guide	5
Winch Parts List	7-8
Solenoid Parts List (Pendant)	9
Solenoid Parts List (Remote)	10
Warranty	11

SAFETY PRECAUTIONS



Safety Precautions To Guard Against Possible Injury.....

- A. Keep yourself and others a safe distance to the side of the cable when pulling under load.
- B. Do not step over a cable, or near a cable under load.
- C. Use supplied hook strap when handling hook for spooling wire rope.
- D. Do not use UTV to pull a load on the winch cable. This could result in cable breakage and/or winch damage
- E. Use a heavy rag or gloves to protect hands from burrs when handling winch cable.
- F. Apply blocks to wheels when UTV is on an incline.
- G. Winch clutch should be disengaged when winch is not in use and fully engaged when in use.
- H. Modification, alteration, or deviation to the winch should only be made by Ramsey Winch Company.
- I. Keep the duration of your pulls as short as possible. If the motor becomes uncomfortably hot to the touch, stop and let it cool for a few minutes. Do not pull more than one minute at or near the rated load. Do not maintain power to the winch if the motor stalls. Electric winches are for intermittent usage and should not be used in constant duty applications.
- J. Do not use winch in hoisting applications due to required hoist safety factors and features.
- K. Do not exceed maximum line pull ratings shown in tables. Shock loads must not exceed these ratings.
- L. To respool correctly, it is necessary to keep a slight load on the cable. Do not allow the cable to slip through your hand and do not approach the winch too closely. When all the cable except a few feet is in, stop and finish spooling in cable by rotating the drum by hand with clutch disengaged. Always use hook strap to hold hook when spooling.



OPERATION TIPS AND TECHNIQUES

Tips for Safe Operation

Don't underestimate the potential danger in winching operations. Neither should you fear them. Do learn the basic dangers and avoid them.

Observe spooling of cable onto drum. Side pulls can cause cable to pileup at one end of the drum. To correct uneven stacking, spool out that section of the cable and move it to the other end of the drum and continue winching. Uneven spooling which causes cable pileup can interfere with the winch tie rods causing damage to the winch.

Never connect the hook back to the cable. This causes cable damage. Always use a sling or chain of suitable strength.

Observe your winch while winching. If possible, while standing at a safe distance. If you use UTV drive to assist, stop and get off every few feet to assure the cable is not piling up in one corner. Jamming cable can break your winch.

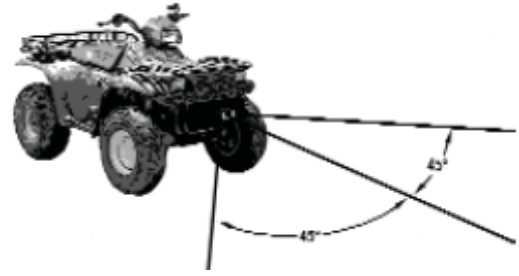
Do not attach tow hooks to winch mounting apparatus. They must attach to UTV frame.

When double lining during stationary winching, the winch hook should be attached to the chassis of the UTV. Since the greatest pulling power is achieved on the innermost layer of your winch, it is desirable to pull off as much line as you can for heavy pulls. If this is not practical, use a snatch block and double line arrangement.

Neat, tight spooling avoids cable binding which is caused when a load is applied and the cable is pinched between two other wraps of cable. If this happens, alternately power the winch in and out a few inches. Do not attempt to work a bound cable under load, free by hand.

Techniques of Operation

The best way to get acquainted with how your winch operates is to make a few test runs before you actually need to use it. Plan your test in advance. Remember you hear your



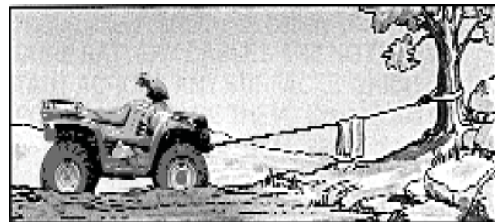
Winches equipped with cable guide fairleads can pull from several directions. Pull from an angle only to straighten up the UTV--otherwise you can damage structural members or other parts of your UTV and cause excess cable buildup on one end of the winch drum.

winch as well as see it operate. Get to recognize the sound of a light steady pull, a heavy pull, and sounds caused by load jerking or shifting. Soon you will gain confidence in operating your winch and its use will become second nature with you.

Your winch will not only pull your UTV up or ease your UTV down a steep grade, it will also pull another UTV or a load while your UTV is anchored in a stationary position.

When pulling a heavy load, place a blanket, jacket or tarpaulin over the cable five or six feet from the hook. It will slow the snap back in the event of a broken cable.

Use the UTV wheel power to help the winch, but don't overtake the winch line. Plan your pull. You can't always hook up and pull out in one step. Examine all the areas for anchoring possibilities as well as leverage situations, direction, and goal.



For basic self-recovery, anchor to a tree or heavy rock. When anchoring to a tree, always use a tree trunk protector.

INSTALLATION NOTES

General Installation

The winch shown in this owners manual is solely and exclusively designed for UTV mounted, non-industrial applications. All other applications will void warranty.

Install Winch and Mounting Kit according to instructions supplied with Mounting Kit. Install winch and roller fairlead to mounting kit using hardware supplied with winch. Tighten mounting bolts to 34 ft-lbs torque.

It is very important that the winch be mounted on a flat surface, with the cable feeding from the bottom of the drum.

Toggle Switch Installation

Do not attach motor and battery leads until instructed to do so.

Before beginning Installation:

- Disengage winch clutch.
 - Locate and mark mounting location for toggle switch.
1. Route red, yellow, and green wires from solenoid to toggle switch location. Make sure that wires are not drawn taut against any surfaces that might damage them.
 2. Drill 1/2" hole in location for toggle switch.
 3. Insert switch through hole.
 4. Place directional plate over switch and secure using knurled nut. Using wrench, tighten backup nut securely against surface

where hole was drilled. Make sure directional plate is installed in the same direction as the toggle switch movement.

5. Place rubber boot over switch and tighten securely.
6. Connect red wire to center spade on toggle switch. Connect green wire to the toggle switch terminal in the "OUT" position. Connect the yellow wire to the toggle switch terminal position in the "IN" position.

When finished, connect the Red battery lead from the solenoid to the Positive (+) terminal of the vehicle battery. Connect the Black battery lead to the Negative (-) terminal.

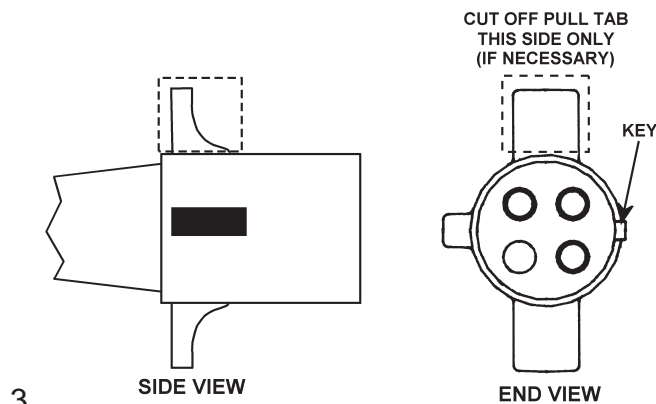
Free-spool a length of cable from the winch. Engage the clutch, and operate the toggle switch in the IN and OUT direction and confirm that the winch operates correctly.

If the winch spools cable in the opposite direction from what is indicated on the directional plate, reverse the yellow and green wires.

Remote Control Switch Installation

Connect the Red battery lead from the solenoid to the Positive (+) terminal of the vehicle battery. Connect the Black battery lead to the Negative (-) terminal.

For some mounting kits, it may be necessary to alter the remote control switch's plug by cutting off one of the pull tabs. Do not alter the plug until you confirm that it is necessary. See the diagram below.



OPERATING INSTRUCTIONS / MAINTENANCE / CABLE INSTALLATION

Operating Instructions

The winch clutch allows rapid unspooling of the wire rope for hooking onto the load or anchor point. The clutch shifter tab is located on the gear-housing end of the winch and operated as follows:

1. To disengage the clutch, move the clutch shifter tab to the "OUT" position. Wire rope may now be free-spooled off the winch.
2. To engage the clutch, move the clutch shifter tab to the "IN" position. The winch is now ready for pulling.

Your battery must be kept in good condition. A fully charged battery and proper connections are essential. Run the vehicle engine during winching operations to keep battery charged.

The remote control switch is waterproof. It has push button stations on either side. It is designed this way to prevent quick winch reversals, which lead to solenoid failure.

Make sure the motor has stopped fully before reversing. To actuate winch simply plug remote control switch into receptacle in black solenoid cover of winch.

Run winch forward and reverse to check connection and to determine winch operating directions. Snap appropriate "IN" and "OUT" disc into proper thumb cavity. The switch is also color coded to aid you in not having to guess at the direction your winch will run. **DO NOT LEAVE SWITCH PLUGGED IN WHEN WINCH IS NOT IN USE.**

Maintenance

Corrosion on electrical connections will reduce performance or may cause a short. Clean all connections. In salty environments use a silicone sealer to protect from corrosion.

To minimize corrosion of the internal motor components that may occur due to condensation, power the winch in or out periodically. Energizing the motor will generate heat, which will help dissipate any moisture buildup in the

motor. This should be performed at periodic intervals (such as with each oil change to your vehicle).

Note: Refer to Troubleshooting Guide if the motor has been submerged.

All moving parts in the winch are permanently lubricated with broad temperature range lithium based grease. Under normal conditions factory lubrication will suffice.

Lubricate cable periodically using light penetrating oil. Inspect for broken strands and replace if necessary. If the cable becomes worn or damaged, it must be replaced.

Cable Installation

Note: Cable should be installed so that it feeds from the bottom of the drum.

It is not necessary to disassemble the winch or remove it from where it is mounted to replace the cable.

Unwind the new cable by rolling it out along the ground to prevent kinking.

Remove old cable and observe the manner in which it is attached to the cable drum. Loosen but do not remove the cable anchor.

Before installing the new cable assembly, make sure the end of the cable is squarely cut and wrapped with tape to prevent fraying.

Feed the taped end of the cable through the fairlead and under the drum.

Slide the cable to the end of the slot on the drum flange under the cable anchor.

Tighten the cable anchor securely to the drum so that the cable is held securely.

Wind five wraps of cable onto the drum by rotating the drum while free-spooled. Wind on the rest of the cable by pulling in a light load to keep tension constant. Allow the cable to swivel by using a length of chain or a block between the cable hook and the load.

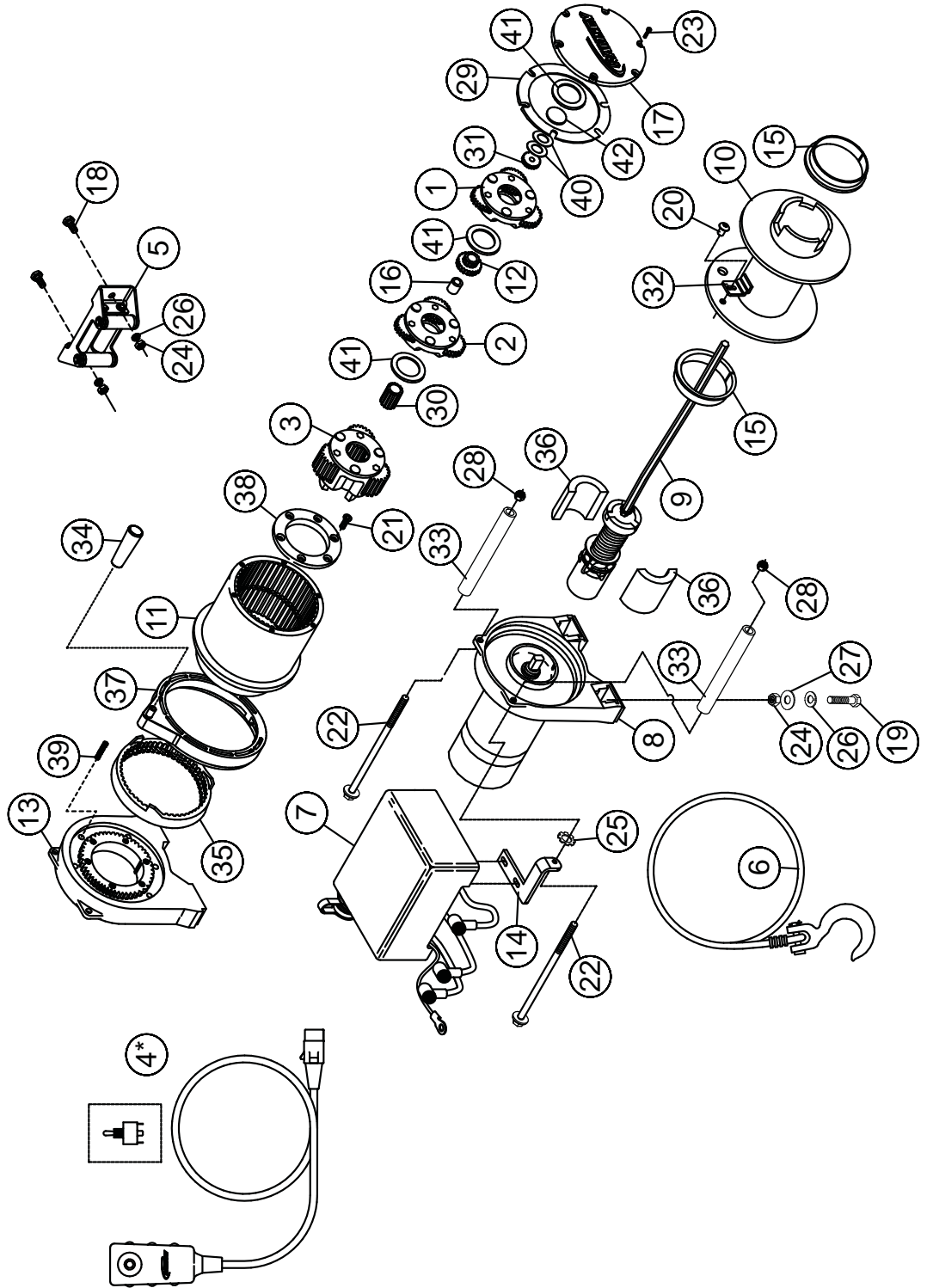
TROUBLE SHOOTING GUIDE

UTV 5000 Trouble Shooting Guide

CONDITIONS	POSSIBLE CAUSE	CORRECTION
MOTOR RUNS IN ONLY ONE DIRECTION	Defective solenoid or stuck solenoid.	Jar solenoid assembly to free contacts. Check each solenoid by applying +12 volts to coil terminal (it should make an audible click when energized).
MOTOR RUNS EXTREMELY HOT	Long period of operation	Cooling-off periods are essential to prevent overheating.
MOTOR RUNS, BUT WITH INSUFFICIENT POWER OR WITH LOW LINE SPEED	Bad connection Insufficient battery Insufficient charging system	Check battery cable for corrosion; clean and grease Test for faulty vehicle battery. Replace with larger capacity charging system.
MOTOR RUNS, BUT DRUM DOES NOT TURN	Clutch not engaged	If clutch engaged but symptoms still exist, it will be necessary to disassemble winch to determine cause and repair.
MOTOR WILL NOT OPERATE	Loose connections. Defective solenoid or stuck solenoid. Defective remote control switch Defective motor	Check all electrical connections from the battery to the motor. Jar solenoid assembly to free contacts. Check solenoid by applying 12 volts to coil terminal (it should make an audible click when energized). Disengage winch clutch, remove remote control switch plug from the socket and jump pins at 8 and 4 o'clock. Motor should run. Jump pins at 8 and 10 o'clock. Motor should run. If solenoids operate, check for voltage at armature post; replace motor.
MOTOR WATER DAMAGED	Submerged in water or water	Allow to drain and dry thoroughly, then from high pressure car wash Run motor without a load in short bursts to dry windings.
CABLE DRUM WILL NOT FREE-SPOOL OR IS DIFFICULT TO FREE-SPOOL	Clutch not disengaged Winch not mounted squarely causing end bearing to bind drum Some or all of the (6) 1/4-20NC capscrews attaching the ring gear retainer are too tight (see Parts Diagram, following page).	Check clutch operation according to nameplate. Make sure clutch shifter tab is fully at "OUT" position. Check that Mounting Kit instructions have been followed. Remove gear housing cover and all gears from inside the gear housing. Disengage the clutch and check to see that the ring gear will rotate by hand. If not, using a hex (Allen) wrench, slightly loosen all the capscrews and then snugly re-tighten them in a criss-cross pattern, but do not over tighten. The ring gear must rotate by hand. Re-assemble the winch.

NOTES

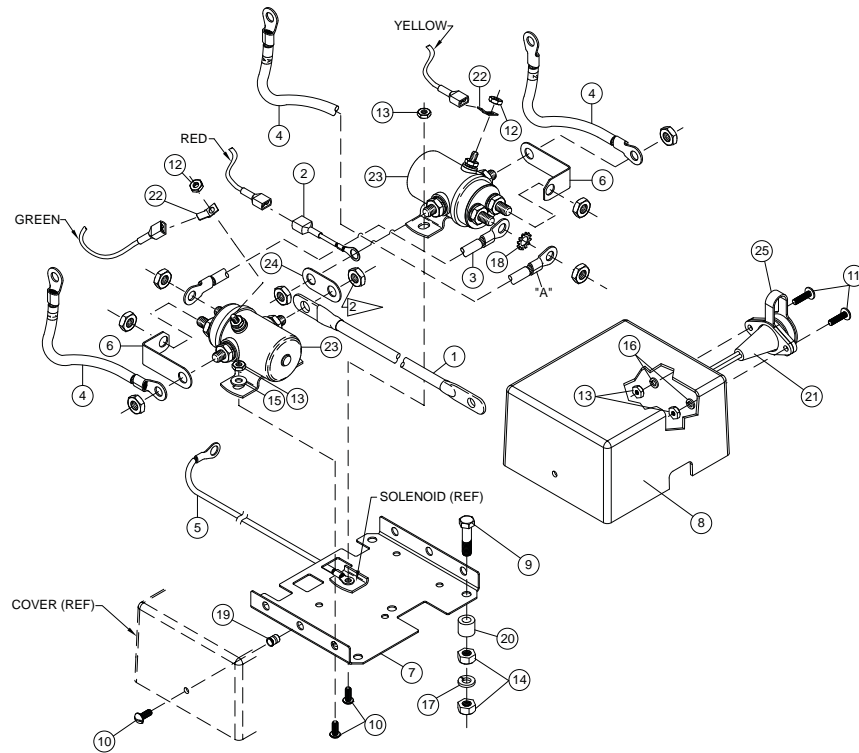
UTV 5000 PARTS DIAGRAM



PARTS LIST

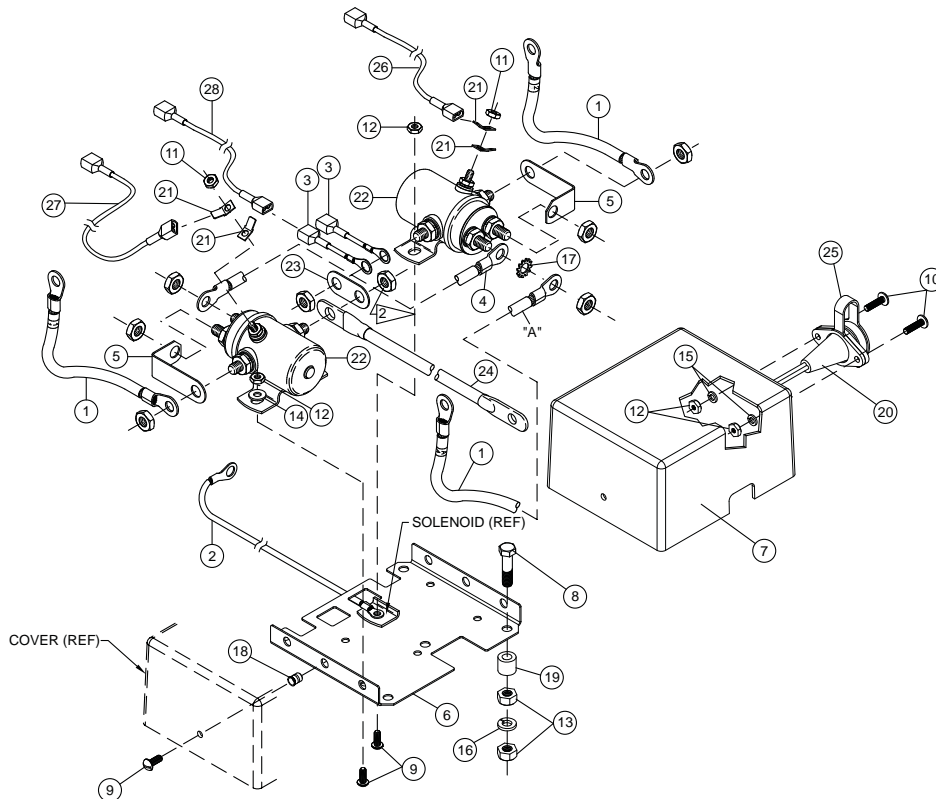
Item No.	Qty.	Part No.	Description
1	1	247024	Gear Carrier Assembly - Input
2	1	247007	Gear Carrier Assembly - Intermediate
3	1	247006	Gear Carrier Assembly - Output
4*	1	251110	Switch Assembly - 12 Ft.
	1	504024	Toggle Switch Assembly
5	1	251236	Roller Fairlead Assembly
6	1	251274	Assembly - Cable, 7/32 Dia. X 60 Ft.
7	1	278158	Solenoid Assembly (Pendant Switch)
		278201	Solenoid Assembly (Toggle Switch)
8	1	296589	Motor/ End Bearing Assembly
9	1	296637	Brake Assembly
10	1	332213	Drum - Cable
11	1	334143	Gear - Ring
12	1	334147	Gear - Intermediate Sun
13	1	338337	End Bearing - Gear Housing
14	1	408315	Solenoid Mounting Bracket
15	2	412056	Bushing - Drum
16	2	412061	Bushing - Shaft
17	1	413018	Cover - Gear Housing
18	2	414314	Capscrew-3/8-16NCX1Lg,HXHD,Z/P,GR.5
19	4	414316	Capscrew-3/8-16NCX1 1/4,HXHD,Z/P,G5
20	1	414830	Capscrew-1/4-20NCX3/8,Soc Button Hd
21	6	414861	Bolt-1/4X20NCX3/4,Flat SocHd,NY-LOK
22	2	415007	Capscrew-M6 X 1 X 107MM LG, HX HD Z/P
23	6	416273	Screw ASM-#6-32NCX3/8&L/W,FILHD/PLT
24	6	418035	Nut-3/8-16NC Hex Reg Zinc Plated
25	1	418165	Washer-5/16 Shake Prf,Ext Teeth,Z/P
26	6	418177	Lockwasher-3/8 Med Sect,Zinc Plated
27	4	418181	Washer-3/8 ID SAE Flat, Zinc Plated
28	2	419004	Locknut-M6 X 1MM, Hex With Nylon Insert,
29	1	442207	Gasket - Gear Housing Cover
30	1	444048	Gear - Output Sun
31	1	444097	Gear-Input Sun
32	1	448071	Cable Anchor
33	2	448105	Tie Bar
34	1	452005	Shifter Lever
35	1	477002	Locking Ring
36	1	477004	Ring - Half
37	1	477013	Cam Ring
38	1	479007	Retainer - Ring Gear
39	6	494077	Spring
40	2	518019	Thrust Washer
41	3	518020	Thrust Washer
42	1	518027	Thrust Disc

Solenoid Assembly 278158 Parts List (Pendant Switch)



Item No.	Qty.	Part No.	Description
1	1	289015	Battery Cable
2	1	289091	Wire Assembly-Black 16 Ga. X 1-1/2" Lg.
3	1	289092	Wire Assembly-Black 6 Ga. X 3-1/2" Lg.
4	3	289171	Wire Assembly-Motor Lead
5	1	289208	Wire Assembly-Ground
6	2	364002	Strap-Copper
7	1	408102	Solenoid Bracket
8	1	413024	Cover-Solenoid
9	3	414053	Capscrew-1/4-20NCX1-1/4 Lg,HxHd,Z/P,Gr5
10	7	416216	Screw-#10-24NCX1/2Lg,RdHd,Slot,Z/PI
11	2	416227	Screw-#10-24NC3/4,Truss,Black
12	2	418001	Nut-#10-32Thd Hex Nut,Zinc Plated
13	6	418004	Nut-Hex #10-24NC Reg.,Zinc Plated
14	6	418014	Nut-1/4-20NC Reg Hex,Zinc Plated
15	3	418140	Washer-#10 Flat Steel,SAE,Zinc Plated
16	2	418141	Lockwasher-#10 Med Section,Plated
17	3	418149	Lockwasher-1/4 Med Section,Zinc Plated
18	1	418165	Washer-5/16 Shake Prf,Ext Teeth,Z/P
19	3	418411	Nutsert #10-24NC
20	3	418514	Spacer
21	1	430013	Connector Female-Molded
22	2	440071	Terminal Tab
23	2	440110	Solenoid 12V
24	1	440111	Strap-Copper
25	1	482029	Cover-Female Connector

Solenoid Assembly 278201 Parts List (Toggle Switch)



Item No.	Qty.	Part No.	Description
1	3	289170	Wire Assembly-Black 2 Ga. x 29 Lg.
2	1	289208	Wire Assembly-Black 18 Ga. x 12-1/2" Lg.
3	2	289091	Wire Assembly-Black 16 Ga. x 1-1/2" Lg.
4	1	289092	Wire Assembly-Black 4 Ga. x 3-1/2" Lg.
5	2	364002	Strap-Copper
6	1	408102	Bracket
7	1	413024	Cover-Solenoid
8	3	414053	Capscrew-1/4-20NCx1-1/4Lg.,HxHd,Z/P,GR5
9	7	416216	Screw-#10-24NC x 1/2 Lg,RdHd,Slot,Z/PI
10	2	416227	Screw-#10-24NC x 3/4,Truss,Cros-Reces,F/B
11	2	418001	Nut-#10-32Thd Hex Nut,Zinc Plated
12	6	418004	Nut-Hex #10-24NC Reg.,Zinc Plated
13	6	418014	Nut-1/4-20NC Reg Hex,Zinc Plated
14	4	418140	Washer-#10 Flat Steel,SAE,Zinc Plt
15	2	418141	Lockwasher-#10 Med Section,Plated
16	3	418149	Lockwasher-1/4 Med Section,Zinc Plt
17	1	418165	Washer-5/16 Shake Prf,Ext Teeth,Z/P
18	3	418411	Nutsert-#10-24NC
19	3	418514	Spacer
20	1	430013	Connector Female-Molded
21	4	440071	Terminal Tab
22	2	440110	Solenoid
23	1	440111	Strap-Copper
24	1	289015	Wire Assembly-Battery Red 72" (REP 6000)
25	1	482029	Cover-Female Connector
	1	299741	Wire Assembly-Consists of:
26	1		#18 Ga. Green Wire 123" long
27	1		#18 Ga. Yellow Wire 123" long
28	1		#18 Ga. Red Wire 123" long

WARRANTY INFORMATION

Warranty Information

Ramsey Winches are designed and built to exacting specifications. Care and skill go into every winch we make. If the need should arise, warranty procedure is outlined on the back of your self-addressed, postage paid warranty card. Please read and fill out the enclosed warranty card and send it to Ramsey Winch Company. If you have any problems with your winch, please follow instructions for prompt service on all warranty claims.

Limited Lifetime Warranty

Ramsey Winch offers a limited lifetime warranty for each new Ramsey UTV winch against manufacturing defects in workmanship and materials on all manufactured components.

Warranty registration cards for each winch must be submitted at the time of purchase, or within 90 days. Online registration of your winch is available at www.ramsey.com.

New cable assemblies are warranted against defects in workmanship and materials. No warranty applies after initial use. All Ramsey mounting kits and other accessories carry a 1- year limited warranty against defects in materials and workmanship.

This warranty is void if winch is used in commercial/industrial applications other than front mount self recovery.

Electrical components consisting of motors, solenoids, wiring, wire connectors, and associated parts carry a limited 1-year warranty. The obligation under this warranty, statutory or otherwise, is limited to the replacement or repair at the manufacturers factory, or at a point designated by the manufacturer, of such part as shall appear to the manufacturer, upon inspection of such part, to have been defective in material or workmanship. This Warranty does not obligate Ramsey Winch Company to bear the cost of transportation charges in connection with the replacement or repair of defective parts, nor shall it apply to a product upon which repairs or alterations have been made, unless authorized by the manufacturer, or for equipment misused, neglected, or improperly installed.

Important notice: To the fullest extent permitted by applicable law, the following are hereby excluded and disclaimed:

1. All warranties of fitness for a particular purpose;
2. All warranties of merchantability;
3. All claims for consequential or incidental damages.

There are no warranties that extend beyond the description that appears on the face hereof. Some states do not allow the above exclusions or disclaimers in consumer transactions and as such this disclaimer/exclusion may not apply to your particular case.

To the extent such warranties of fitness for a particular purpose or merchantability are deemed to apply to this product, they exist only for so long as the express limited warranty elsewhere set forth is in existence.

Ramsey Winch Company makes no warranty in respect to accessories, same being subject to the warranties of their respective manufacturers.

Ramsey Winch Company, whose policy is one of continuous product improvement, reserves the right to improve any product through changes in design or materials as it may deem desirable without being obligated to incorporate such changes in products of previous manufacture.

If field service at the request of the buyer is rendered and the fault is found not to be with Ramsey Winch Company's product, the buyer shall pay the time and expense of the field representative. Bills for service, labor or other expenses which have been incurred by the buyer without express approval or authorization by Ramsey Winch Company will not be accepted.

This Warranty gives you specific legal rights and you may also have other legal rights which vary from state to state.

RAMSEY WINCH COMPANY

P.O. BOX 581510 TULSA, OKLAHOMA 74158-1510

USA PHONE: (918) 438-2760 FAX: (918) 438-6888

<http://www.ramsey.com>

