



# WC 65R

## Heavy Duty Planetary

**65,000 lb**  
Rated Line Pull



### Features and Benefits

- 2-Year Warranty
- Fast line speed
  - Up to 34 ft/min under full load
- Oil-impregnated bronze drum bushings
  - Eliminates external drum grease zerks for less field maintenance
- Heavy-duty clutch yoke
  - Designed for easy access field maintenance
- Heavy-duty shafts
  - For strength and durability
- Symmetrical design
  - For streamline mounting
- Heavy-duty clutch splined directly to shaft
  - For strength and reliability
- 2-Speed gear motor
- SAE J706

### WC 65R Specifications

Rated Line Pull (Low Speed)	65,000 lb (29,480 kg)
Weight (without Cable)	1305 lb (592 kg)
Gear Reduction	87:1

WC 65R Standard Drum					
Layer of Cable		1	2	3	4
Rated Line Pull / Layer*	lb	65,000	53,100	45,000	39,000
	kg	29,480	24,080	20,410	17,690
Rated Line Pull / Layer*	lb	26,500	21,600	18,300	15,900
	kg	12,020	9,790	8,300	7,210
Line Speed – Low (at 60 GPM)*	FPM	34	41	48	55
	(MPM)	10	12	14	16
Line Speed – High (at 60 GPM)*	FPM	76	91	106	121
	(MPM)	23	27	32	37
Cable Capacity*	ft	40	90	150	215
	m	12	27	45	65

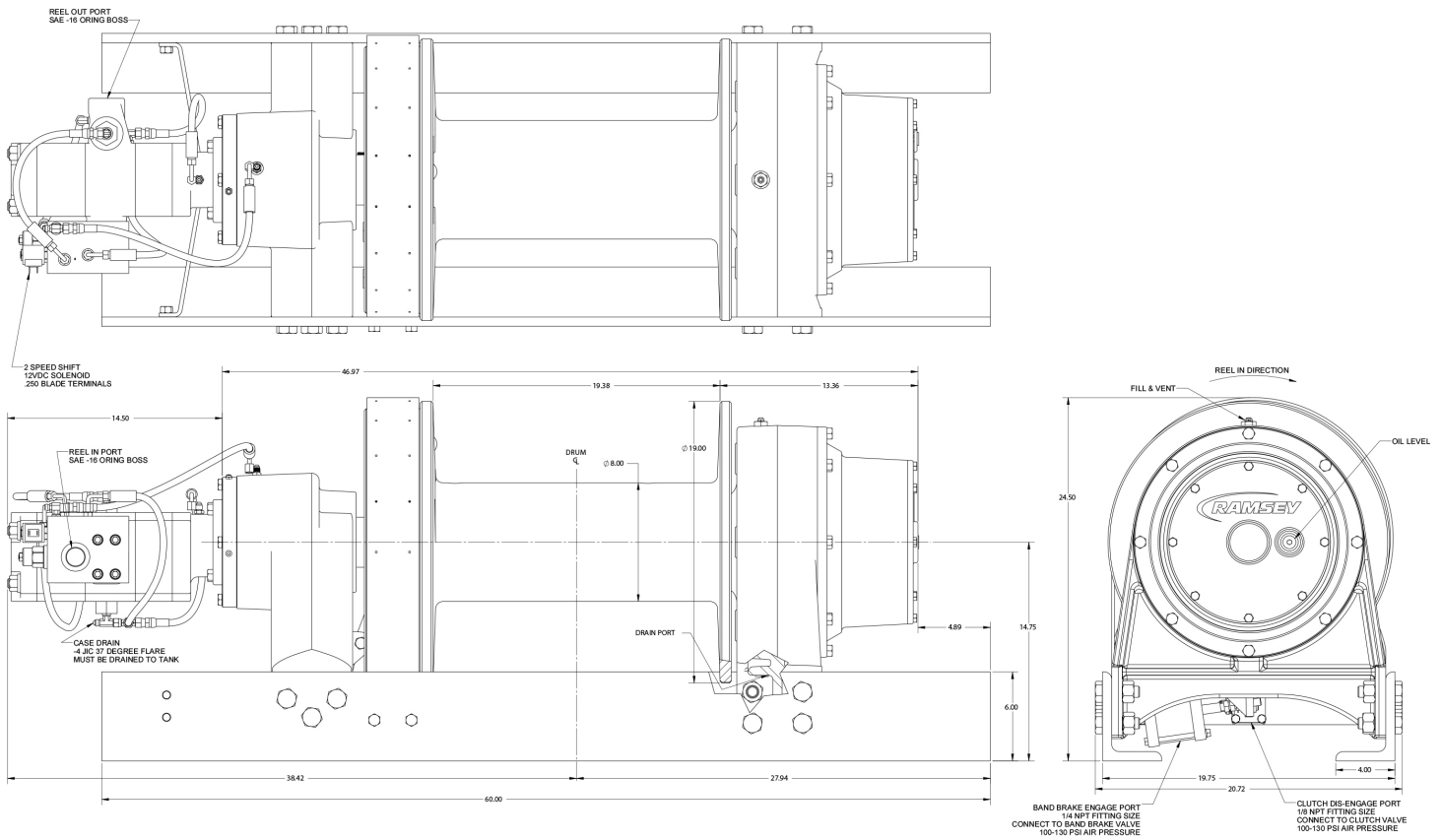
\*Specifications based on recommended wire rope of 1 inch dia. EIPS cable and 10.9 cu. in./rev. motor at 2,600 psi working pressure and 60 gpm flow.

– Directional control valve: 3-position, 4-way motor spool.

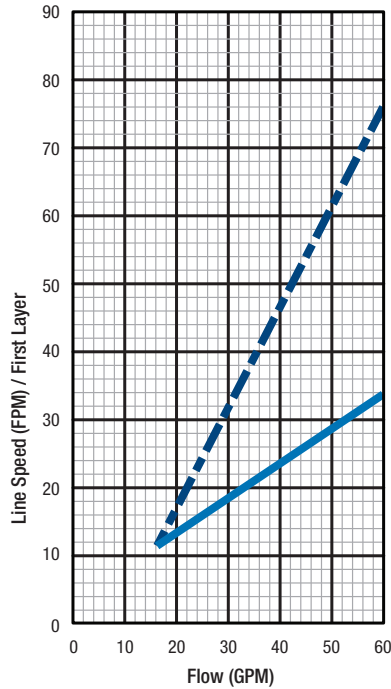
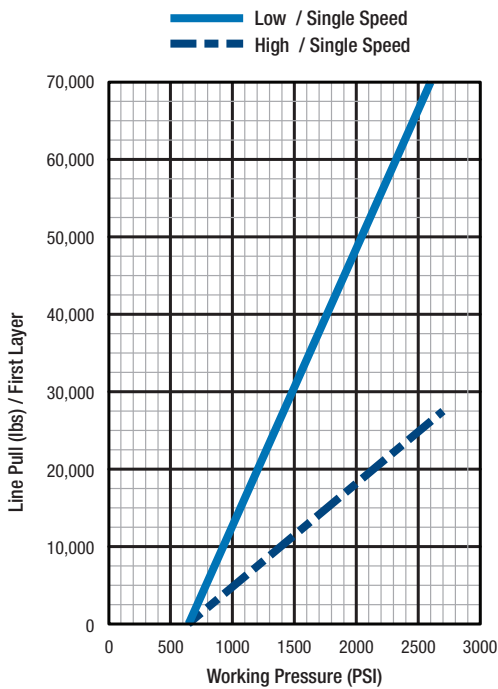
– Winch meets SAE J706.

Wildcat Winch Series® and Ramsey Winch® are brands of Ramsey Winch Company, a wholly owned subsidiary of Ramsey Industries, Inc. Ramsey Winch reserves the right to make changes to our products without notice.

**ramsey.com**



## Performance with 10.9 in<sup>3</sup>/Rev Motor



Wildcat Winch Series® and Ramsey Winch® are brands of Ramsey Winch Company, a wholly owned subsidiary of Ramsey Industries, Inc. Ramsey Winch reserves the right to make changes to our products without notice.